



Say What You Want

Building a Full-Speed Anti-Censorship Router

Hack In The Box 2023 Phuket

Question



Any Chinese Friend in the room ?



About kaijern @onlyxwings



Qiling Framework

Cross platform and multi architecture advanced binary emulation framework

- > <https://qiling.io>
- > Lead Developer
- > Founder

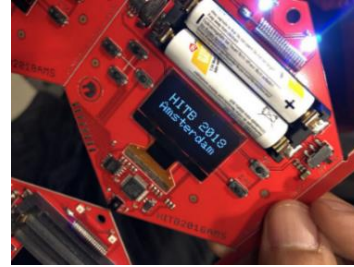


Badge Maker

Electronic fan boy, making toys from hacker to hacker

- > Reversing Binary
- > Reversing IoT Devices
- > Part Time CtF player

Badge Designer for Hacking Conferences



Some Recent Talk (Partial)

- > 2018, HITB, Beijing/Dubai
- > 2018, beVX, Hong Kong
- > 2019, DEFCON USA
- > 2019, Zeronights, St Petersburg
- > 2020, Nullcon, GOA
- > 2020, Blackhat USA, Asia, Europe
- > 2021, Blackhat USA, Asia
- > 2022, Blackhat EU. Blackhat MEA

Qiling Framework

- > Cross platform and cross architecture binary instrumentation framework
- > Emulate and instrument ARM, ARM64, MIPS, X86 and X8664
- > Emulate and instrument Linux, MacOS, Windows and FreeBSD
- > High-level Python API access to register, CPU and memory
- > 4000+ Github star, more than 100,000+ pypi download, 70+ contributors worldwide



How It All Started

Entering China and stuck for 3 years

出入境记录凭证
Statement of Travel Records

姓名: LAU KAI JERN
Name

证件号码: [REDACTED]
Document Num

出入境类型: 入境/Arrival
Departure/Arrival

出入境日期: 2020/01/28
Date

出入境口岸: 广州白云
Port

[REDACTED]

中国边检
CHINA IMMIGRATION INSPECTION



What is the WALL

Facebook, year 2009

China [edit]

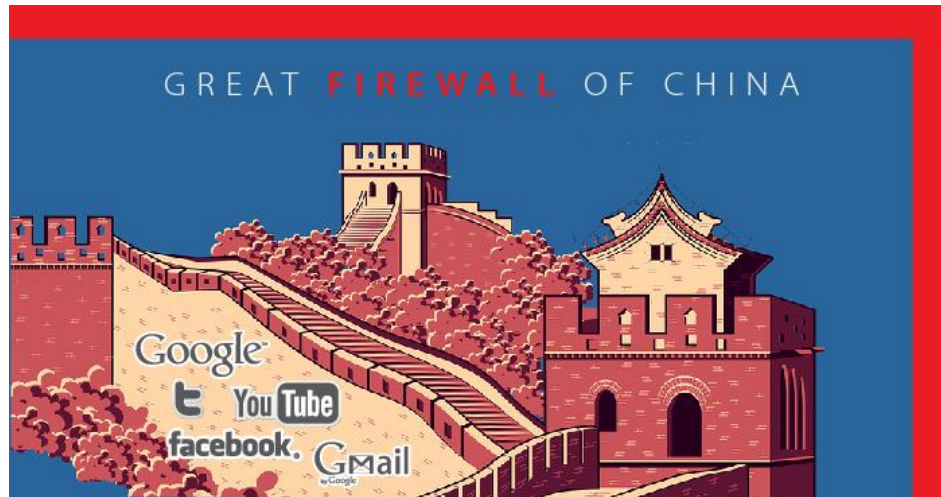
Main article: *Internet censorship in China*

See also: *Great Firewall of China*

In China, Facebook was blocked following the July 2009 Ürümqi riots because protestors with the East Turkestan independence movement were using Facebook as part of their communications network to organize attacks across the city; Facebook refused to release the protestor identities and information to the Chinese government.^[14] Some Chinese users also believed that Facebook would not succeed in China after Google China's problems in 2013.^[15] Renren (formerly Xiaonei) has many features similar to Facebook, and complies with PRC Government regulations regarding content filtering.

As of 20 August 2013, there have been reports of Facebook being partially unblocked in China.^[16] However, according to the "Blocked in China" website, Facebook is still blocked as of 7 December 2019.^[17] Facebook is not blocked in Hong Kong and Macau, which are special administrative regions operating under different systems. Facebook is currently working on a censorship project for China, where a third party would be allowed to regulate Facebook and control popular stories that come around. This would be a huge attempt by Facebook to get back into China.^[18]

On 6 July 2020, Facebook announced that the company would stop reviewing requests for Hong Kong users' data while evaluating the newly imposed Hong Kong national security law by the Chinese government.^[19]



Not Only for Users

Website and Domains

The screenshot shows the Microsoft China homepage. The browser address bar displays 'microsoft.com/zh-cn'. The page features a navigation bar with '商业版' (Business) and a search icon. Below the navigation, there are four main product highlights:

- 全新产品** (New Product): **Surface Pro 9 商用版** (Surface Pro 9 Business). Description: 赋能灵活全天工作, 兼具平板电脑的便携和笔记本电脑的性能。 (Empowers flexible all-day work, combining the portability of a tablet and the performance of a laptop.) [立即购买 >](#)
- 免费试用 Microsoft 365** (Free Trial Microsoft 365). Description: 通过为期一个月的免费 Microsoft 365 商业标准版试用版, 获取 Microsoft Teams、安全的云存储空间和跨设备高级应用。 (Get a one-month free trial of Microsoft 365 Business Standard, including Microsoft Teams, secure cloud storage, and advanced cross-device apps.) [开始免费试用 >](#)
- 在采用混合工作模式的世界里取得成功** (Succeed in a world of hybrid work). Description: 探索工具、资源和策略, 帮助员工在采用灵活工作模式的全新世界里取得成功。 (Explore tools, resources, and strategies to help employees succeed in a new world of flexible work.) [了解详情 >](#)
- Visual Studio 2022**. Description: 为使用 Windows 系统的 .NET 和 C++ 开发人员提供功能全面的 IDE, 助其构建 web、云、桌面设备应用、移动应用、服务和游戏。 (Provides a full-featured IDE for .NET and C++ developers on Windows, helping them build web, cloud, desktop, mobile, and game applications.) [下载 Visual Studio 2022 >](#)

At the bottom, there is a '关注 Microsoft' (Follow Microsoft) section with WeChat and Weibo icons, and a '返回页首' (Back to top) button.

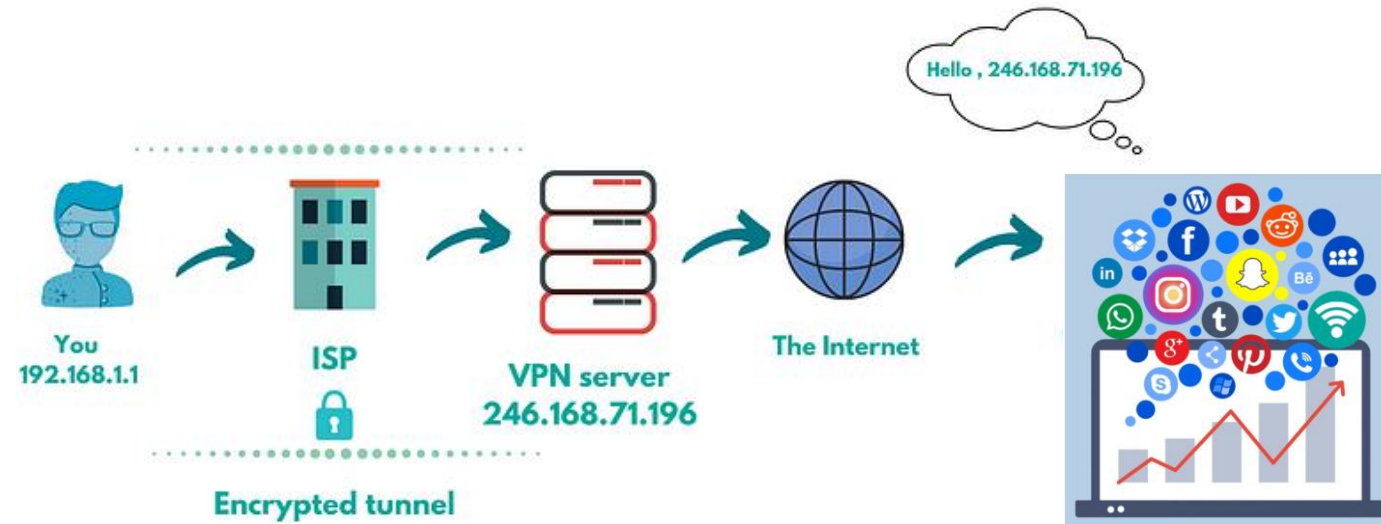
新增内容	Microsoft Store	教育	企业	开发人员与 IT	公司
Microsoft 365	帐户个人资料	Microsoft 教育版	Microsoft Cloud	开发人员中心	投资者
Surface Laptop 2	下载中心	教育设备	Microsoft 安全	文档	关于 Microsoft
Surface Go	订单跟踪	Microsoft Teams 教育版	Azure	Microsoft Learn	公司新闻
Windows 11 应用程序		Microsoft 365 教育版	Dynamics 365	Microsoft 技术社区	Microsoft 隐私
		Office 教育版	Microsoft 365	Azure 市场	投资人
		教育工作培训和开发	Microsoft Advertising	AppSource	可持续发展
		面向学生和家长的优惠	Microsoft 行业	Microsoft Power Platform	
		面向学生的 Azure	Microsoft Teams	Visual Studio	

The screenshot shows the Tesla China website. The browser address bar displays 'tesla.cn'. The page features a navigation bar with 'TESLA' and a '导航栏' (Navigation) button. The main content area is titled '充电产品和精品配件' (Charging products and premium accessories). Below the title, there is a large image of a Tesla charging cable. A red dashed arrow points from the cable to a black button with the text '立即购买' (Buy Now). At the bottom, there is a footer with copyright information and legal notices.

Tesla © 2023 沪ICP备2021004806号-1 沪公网安备 31011502017892号 营业执照 隐私和法律 联系我们 工作机会 最新消息

Website and domain need to be verified by Local Authority

VPN



Self Hosted VPN is illegal

But ...

Domain, Website and Content



Content Filtering

But language

Pictures

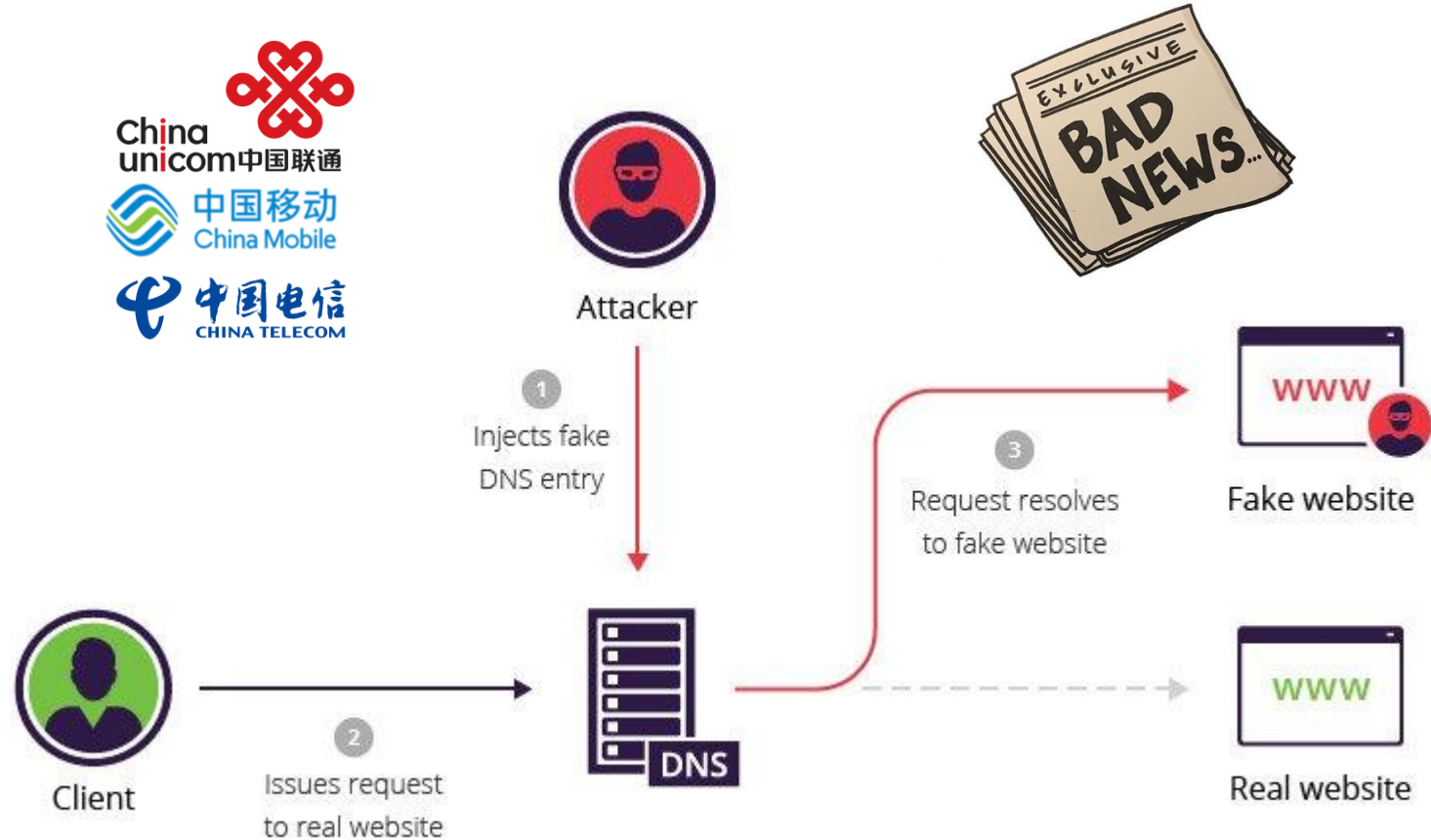
Server connections

Tell me more about language

Full human review, of coz they will tell you AI

Great Firewall ++

Targeted Area DNS pollution



Run by local telco, city/town

Over block is always better

Random Over Block

Random Freedom

Special Day: Next page

Special Day



How To Get Connected

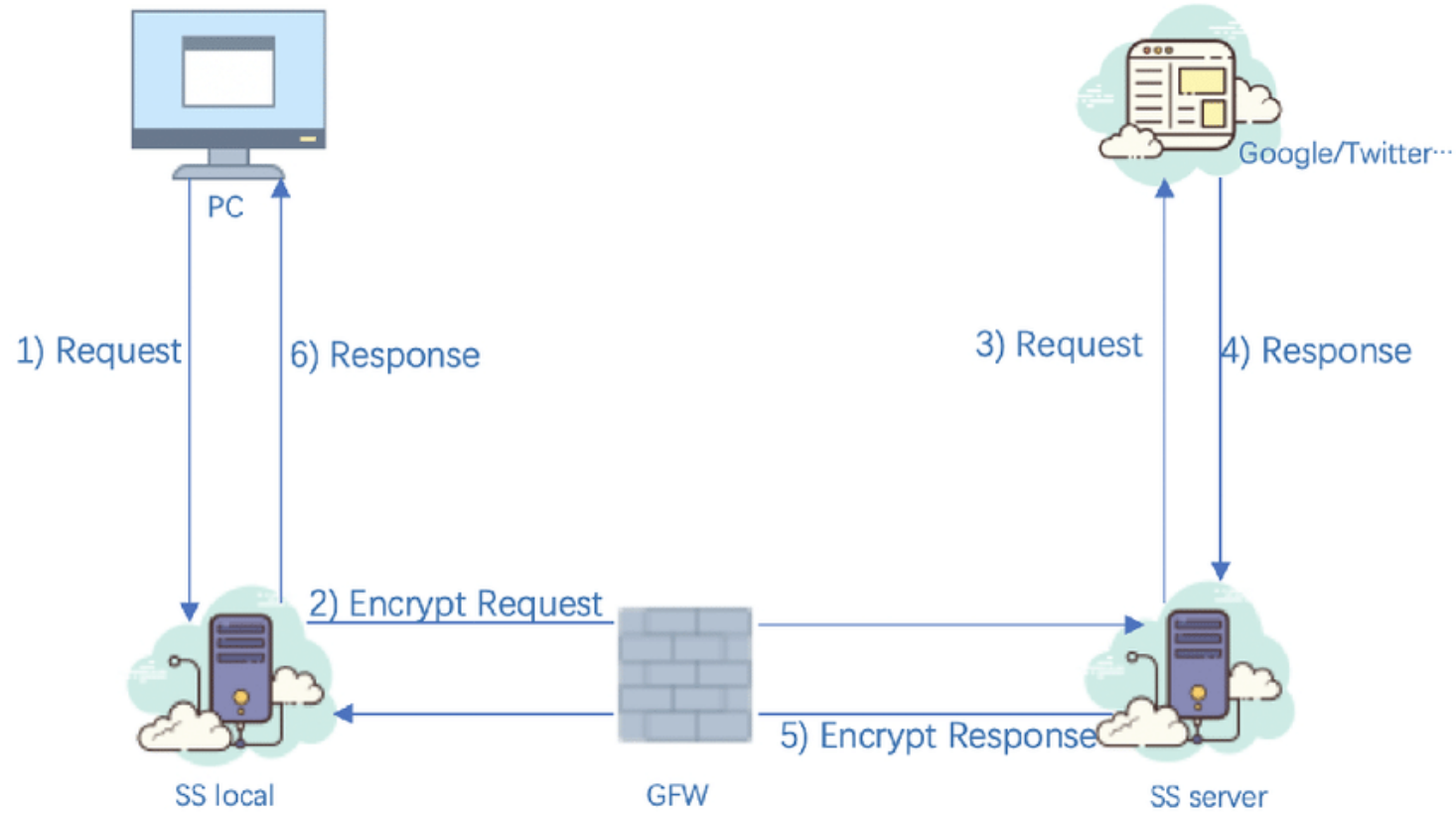
VPN



It started with VPN, but local APP is an Issue

A New Hope

The era of Shadowsocks/SSR



chromiumer/
shadowsocks-http-proxy

shadowsocks-http-proxy



1 Contributor 1 Issue 2 Stars 1 Fork

shadowsocks/ShadowsocksX-NG

#226 **Rules by GeoIP**

3 comments

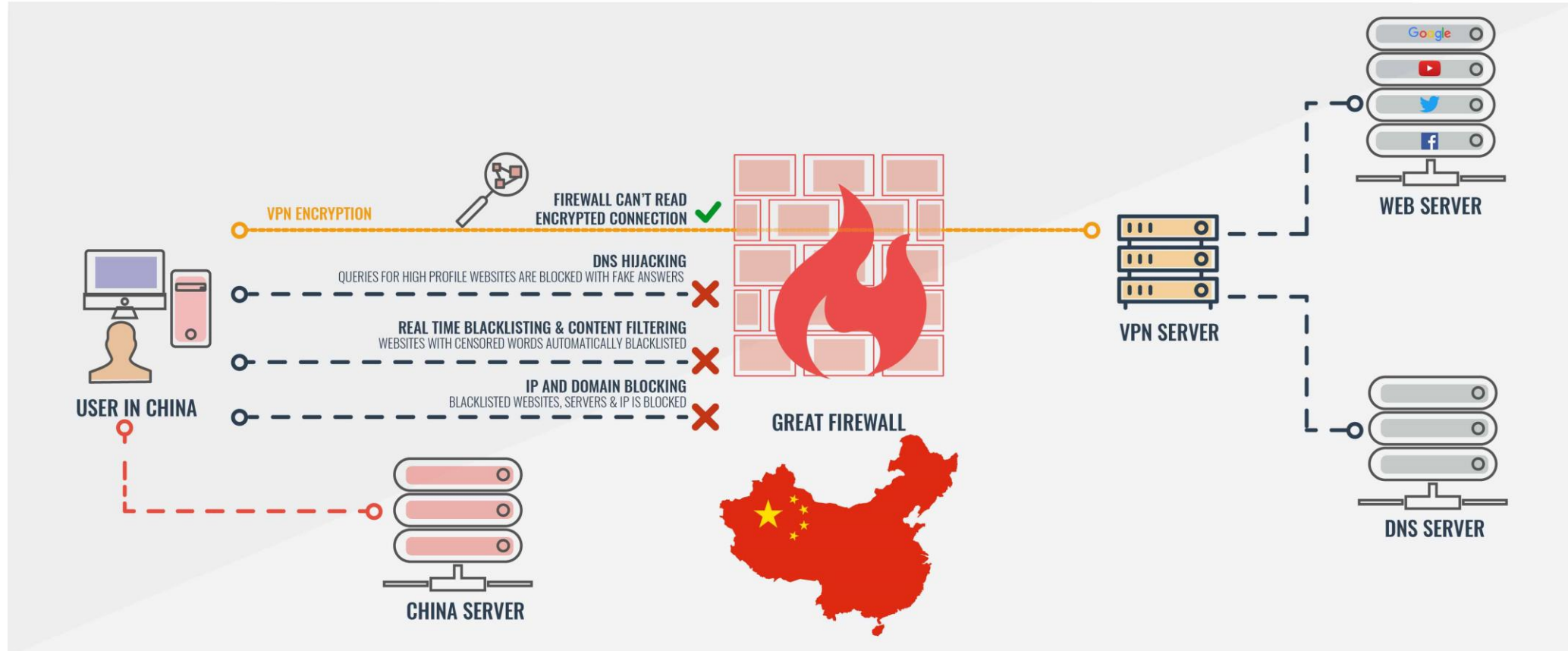


ghost opened on February 2, 2017

Cat and mouse game

Evolution

Xray [Shadowsocks/SSR/Trojan/Vmess/Vless]



Compilation of different protocol

HelmiWrt - LuCI

HelmiWrt - Overviews - LuCI

HelmiWrt - Interfaces - LuCI

https://192.168.1.1/cgi-bin/luci/admin/services/openclash/client

HelmiWrt

AUTO REFRESH ON

Overview Global Settings Servers and Groups Rule Providers and Groups Config Update Config Manage Server Logs

Status

System

Services

- Pass Wall
- AdGuard Home
- ShadowSocksR Plus+
- OpenClash**
- Wake on LAN
- OpenVPN
- KMS Server

Docker

NAS

VPN

Network

Bandwidth Monitor

OpenClash

A Clash Client For OpenWrt

Current Version **v0.42.05-beta**

Tutorials Star Telegram Sponsor

Tip: after started, please wait patiently until the connection is normal

Main Program	Running	Control Panel Login IP	192.168.1.1
Core Daemons	Running	Control Panel Login Port	9090

Performing a TLS handshake to www.baidu.com...

策略组

代理

日志

规则

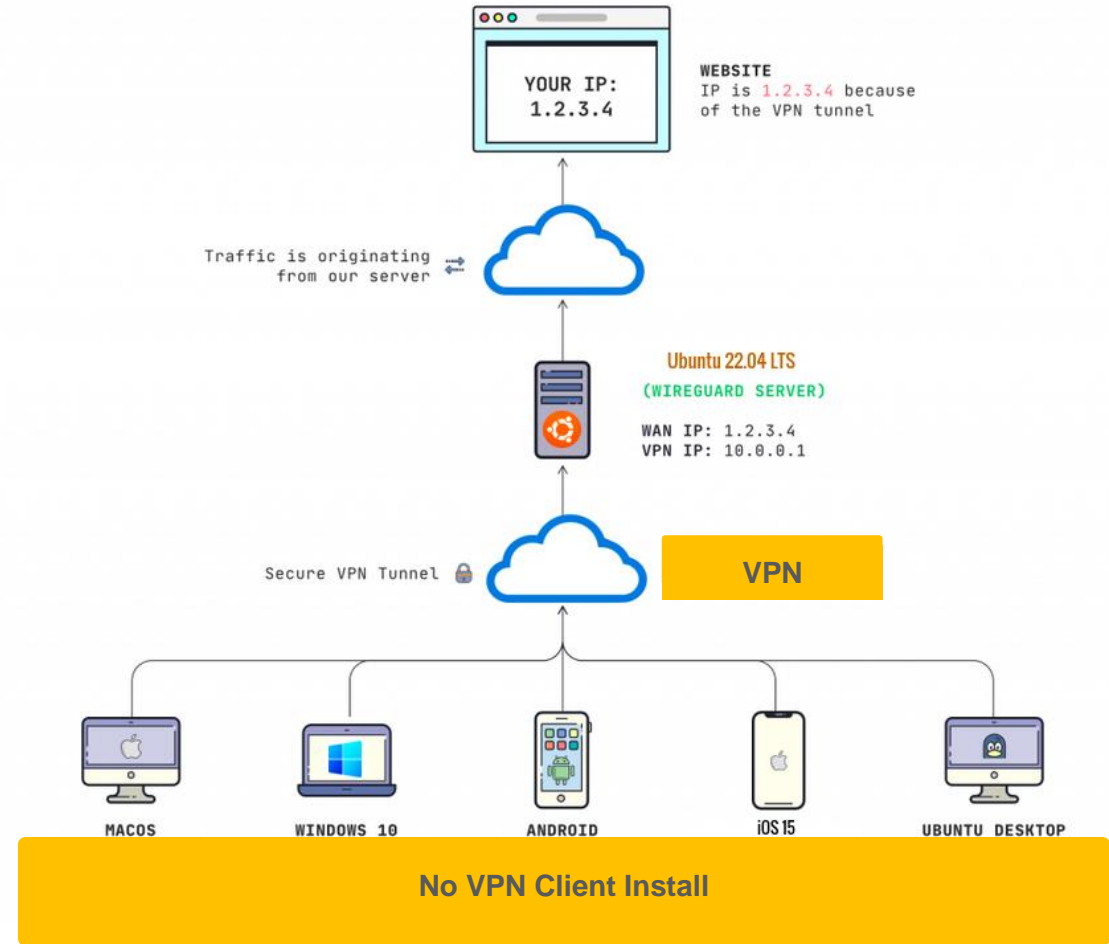
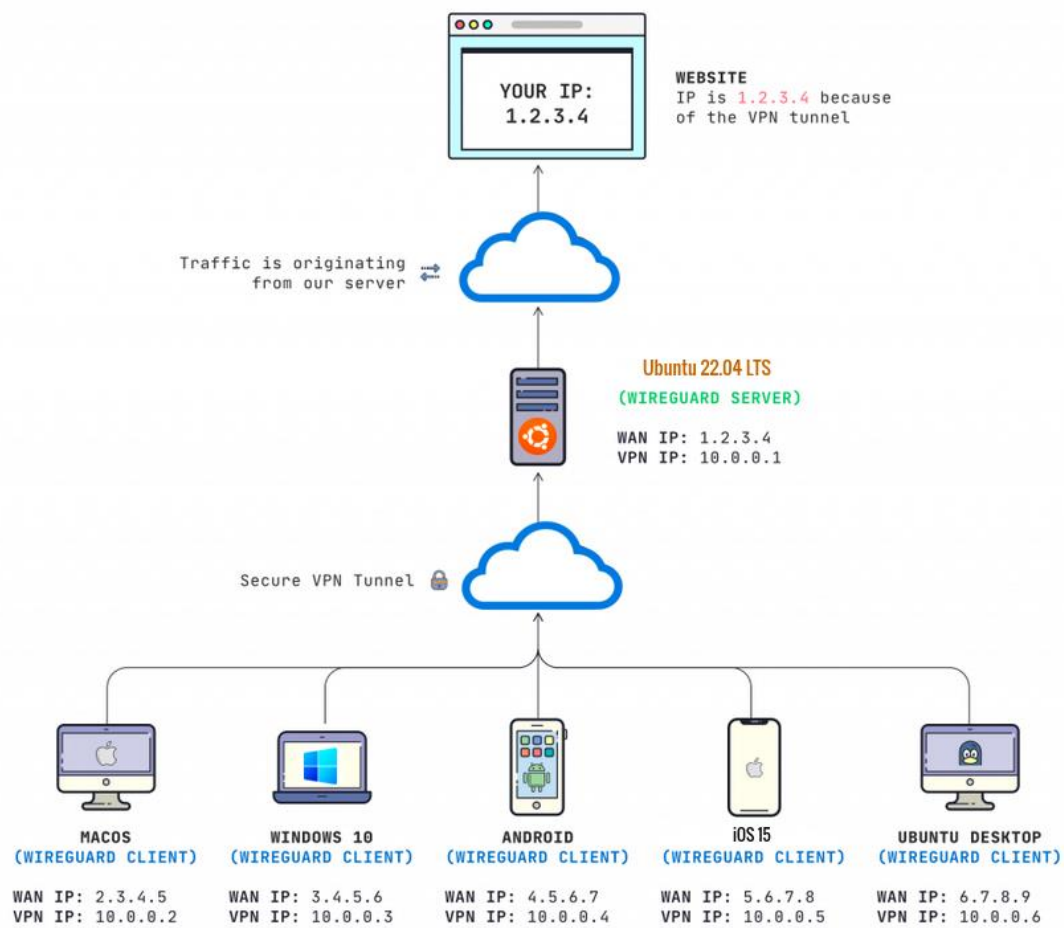
连接

设置

Proxy	Selector	Auto-URLTest	DIRECT	cn 台湾 AC	cn 台湾 EPL [01] Lite	cn 台湾 EPL [02] Lite	cn 德国 AC	cn 德国 EPL [01] Lite	cn 德国 EPL [02] Lite	cn 新加坡 AC
Domestic	Selector	DIRECT	Proxy	cn 台湾 AC	cn 台湾 EPL [01] Lite	cn 台湾 EPL [02] Lite	cn 德国 AC	cn 德国 EPL [01] Lite	cn 德国 EPL [02] Lite	cn 新加坡 AC
Others	Selector	Proxy	DIRECT	cn 台湾 AC	cn 台湾 EPL [01] Lite	cn 台湾 EPL [02] Lite	cn 德国 AC	cn 德国 EPL [01] Lite	cn 德国 EPL [02] Lite	cn 新加坡 AC
AdBlock	Selector	REJECT	DIRECT	Proxy						
Apple	Selector	DIRECT	Proxy	cn 台湾 AC	cn 台湾 EPL [01] Lite	cn 台湾 EPL [02] Lite	cn 德国 AC	cn 德国 EPL [01] Lite	cn 德国 EPL [02] Lite	cn 新加坡 AC
Apple TV	Selector	Proxy	DIRECT	cn 台湾 AC	cn 台湾 EPL [01] Lite	cn 台湾 EPL [02] Lite	cn 德国 AC	cn 德国 EPL [01] Lite	cn 德国 EPL [02] Lite	cn 新加坡 AC
Google FCM	Selector	Proxy	DIRECT	cn 台湾 AC	cn 台湾 EPL [01] Lite	cn 台湾 EPL [02] Lite	cn 德国 AC	cn 德国 EPL [01] Lite	cn 德国 EPL [02] Lite	cn 新加坡 AC
Scholar	Selector	DIRECT	Proxy	cn 台湾 AC	cn 台湾 EPL [01] Lite	cn 台湾 EPL [02] Lite	cn 德国 AC	cn 德国 EPL [01] Lite	cn 德国 EPL [02] Lite	cn 新加坡 AC
Asian TV	Selector	DIRECT	Proxy	cn 台湾 AC	cn 台湾 EPL [01] Lite	cn 台湾 EPL [02] Lite	cn 德国 AC	cn 德国 EPL [01] Lite	cn 德国 EPL [02] Lite	cn 新加坡 AC
Global TV	Selector	Proxy	DIRECT	cn 台湾 AC	cn 台湾 EPL [01] Lite	cn 台湾 EPL [02] Lite	cn 德国 AC	cn 德国 EPL [01] Lite	cn 德国 EPL [02] Lite	cn 新加坡 AC
Netflix	Selector	Proxy	DIRECT	cn 台湾 AC	cn 台湾 EPL [01] Lite	cn 台湾 EPL [02] Lite	cn 德国 AC	cn 德国 EPL [01] Lite	cn 德国 EPL [02] Lite	cn 新加坡 AC
Disney	Selector	Proxy	DIRECT	cn 台湾 AC	cn 台湾 EPL [01] Lite	cn 台湾 EPL [02] Lite	cn 德国 AC	cn 德国 EPL [01] Lite	cn 德国 EPL [02] Lite	cn 新加坡 AC
Spotify	Selector	Proxy	DIRECT	cn 台湾 AC	cn 台湾 EPL [01] Lite	cn 台湾 EPL [02] Lite	cn 德国 AC	cn 德国 EPL [01] Lite	cn 德国 EPL [02] Lite	cn 新加坡 AC
YouTube	Selector	Proxy	DIRECT	cn 台湾 AC	cn 台湾 EPL [01] Lite	cn 台湾 EPL [02] Lite	cn 德国 AC	cn 德国 EPL [01] Lite	cn 德国 EPL [02] Lite	cn 新加坡 AC
Telegram	Selector	Proxy	DIRECT	cn 德国 AC	cn 德国 EPL [01] Lite	cn 德国 EPL [02] Lite	cn 新加坡 AC	cn 新加坡 Aliyun [01]	cn 新加坡 Aliyun [02]	cn 新加坡 Aliyun [03]
Crypto	Selector	Proxy	DIRECT	cn 台湾 AC	cn 台湾 EPL [01] Lite	cn 台湾 EPL [02] Lite	cn 德国 AC	cn 德国 EPL [01] Lite	cn 德国 EPL [02] Lite	cn 新加坡 AC
Discord	Selector	Proxy	DIRECT	cn 台湾 AC	cn 台湾 EPL [01] Lite	cn 台湾 EPL [02] Lite	cn 德国 AC	cn 德国 EPL [01] Lite	cn 德国 EPL [02] Lite	cn 新加坡 AC
Steam	Selector	Proxy	DIRECT	cn 台湾 AC	cn 台湾 EPL [01] Lite	cn 台湾 EPL [02] Lite	cn 德国 AC	cn 德国 EPL [01] Lite	cn 德国 EPL [02] Lite	cn 新加坡 AC
Speedtest	Selector	Proxy	DIRECT	cn 台湾 AC	cn 台湾 EPL [01] Lite	cn 台湾 EPL [02] Lite	cn 德国 AC	cn 德国 EPL [01] Lite	cn 德国 EPL [02] Lite	cn 新加坡 AC
PayPal	Selector	Proxy	DIRECT	cn 台湾 AC	cn 台湾 EPL [01] Lite	cn 台湾 EPL [02] Lite	cn 德国 AC	cn 德国 EPL [01] Lite	cn 德国 EPL [02] Lite	cn 新加坡 AC
Microsoft	Selector	Proxy	DIRECT	cn 台湾 AC	cn 台湾 EPL [01] Lite	cn 台湾 EPL [02] Lite	cn 德国 AC	cn 德国 EPL [01] Lite	cn 德国 EPL [02] Lite	cn 新加坡 AC
ChatGPT	Selector	Proxy	DIRECT	cn 台湾 AC	cn 台湾 EPL [01] Lite	cn 台湾 EPL [02] Lite	cn 德国 AC	cn 德国 EPL [01] Lite	cn 德国 EPL [02] Lite	cn 新加坡 AC
Auto-URLTest	URLTest	cn 台湾 AC	cn 台湾 EPL [01] Lite	cn 台湾 EPL [02] Lite	cn 新加坡 AC	cn 新加坡 Aliyun [01]	cn 新加坡 Aliyun [02]	cn 新加坡 Aliyun [03]	cn 新加坡 Aliyun [04]	cn 新加坡 Aliyun [05]

How to Build Tunnel

Deployment: Client/Server Vs Gateway



Depends on your requirement

Journey to Start Building a Home Router

Version 1

Resource Hungry

Not Driver Friendly

Support Less Arch

Only Full VM

No Backup Build In

Less Flexible



A screenshot of the vSphere Client interface. The main window displays the summary page for a virtual machine named 'upg-dhcp-1570-vm-028.cpbu.lab'. The interface includes a top navigation bar with 'Menu', 'Search in all environments', and a user profile 'Administrator@VSPHERE.LOCAL'. The left sidebar shows a tree view with folders for 'Barcelona' and 'Madrid', and sub-folders 'BCN' and 'MAD'. The main content area has tabs for 'Summary', 'Monitor', 'Configure', 'Permissions', 'Datacenters', 'Hosts & Clusters', 'VMs', 'Datastores', 'Networks', 'Linked vCenter Server Systems', and 'Extensions'. The 'Summary' tab is active, showing a green VM icon, version information (7.0.0), build number (15526038), last updated date (Feb 14, 2020, 3:34 PM), and last file-based backup date (Feb 27, 2020, 2:00 PM). Below this, it lists 'Clusters: 1', 'Hosts: 3', and 'Virtual Machines: 9'. On the right side, there are resource usage graphs for CPU (Used: 2.49 GHz, Capacity: 13.17 GHz), Memory (Used: 10.69 GB, Capacity: 23.99 GB), and Storage (Used: 12.75 GB, Capacity: 142.99 GB). At the bottom, there are sections for 'Health Status' (Overall Health: Good), 'vCenter HA' (Mode: --, State: --), 'APPLIANCE MANAGEMENT', 'Custom Attributes', 'Settings', and 'Tags'.

Self Hosted VPN is illegal

But ...

Version 2

Customized Board

Customized CPU

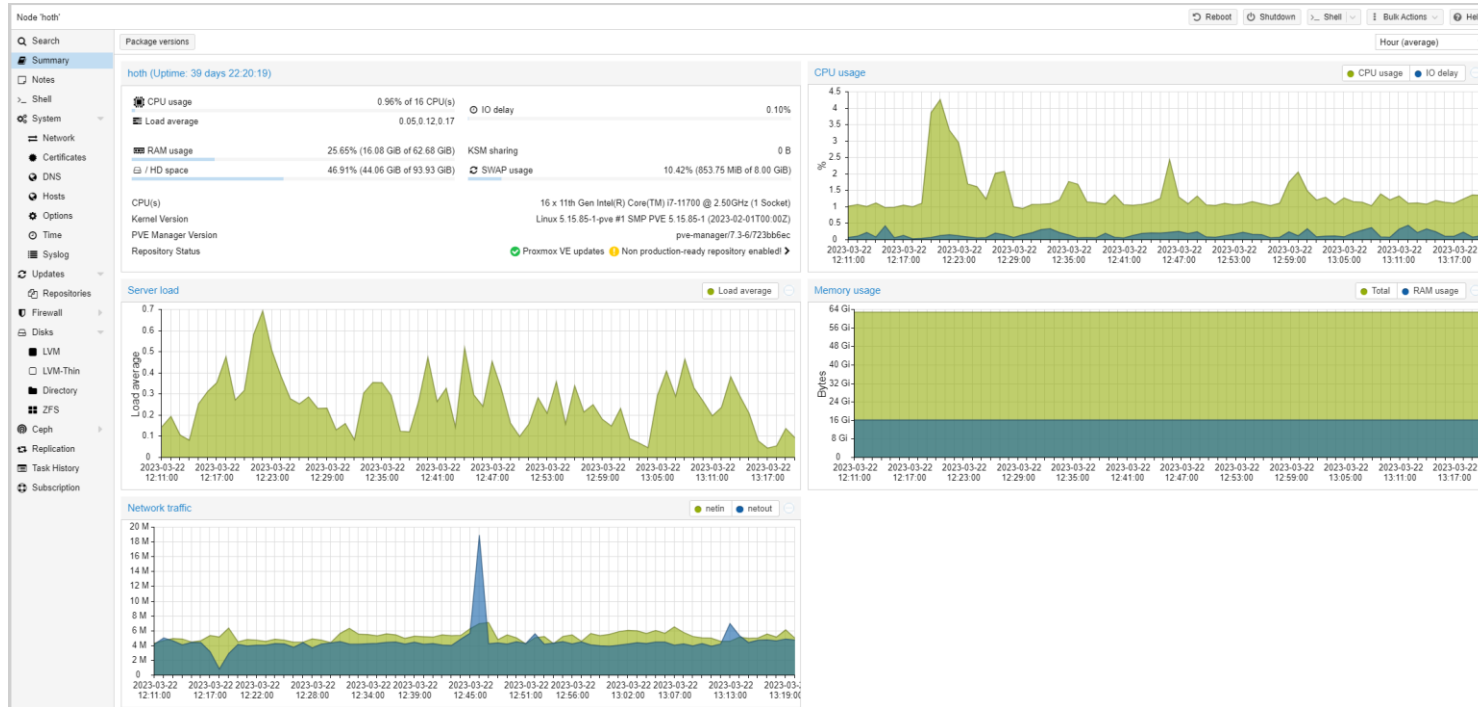
GPU

10GB NIC

6 HDD Bay

USB 3 + Type C





PROXMOX Virtual Environment 7.3-6

Server View

Datacenter

Search

Type	Description	Disk usage	Memory us...	CPU usage	Uptime	Host CPU ...	Host Mem ...	Tags
lxc	110 (batuu)	0.5 %	10.3 %	0.1% of 4 ...	39 days 22.1...	0.0% of 16...	0.7 %	
lxc	200 (drall)	4.7 %	24.0 %	0.2% of 4 ...	39 days 22.1...	0.1% of 16...	3.1 %	
lxc	201 (daiyu)	11.7 %	17.6 %	0.0% of 8 ...	39 days 22.1...	0.0% of 16...	2.2 %	
lxc	202 (yavin)	5.5 %	0.2 %	0.0% of 8 ...	39 days 22.1...	0.0% of 16...	0.1 %	
lxc	203 (agamar)	2.3 %	2.5 %	0.0% of 4 ...	39 days 22.0...	0.0% of 16...	0.2 %	
lxc	299 (debian-tmp)	-	-	-	-	-	-	
node	hoth	46.9 %	25.6 %	1.0% of 16 ...	39 days 22.1...	-	-	
qemu	100 (hapes)	0.0 %	33.1 %	7.8% of 1 ...	39 days 22.1...	0.5% of 16...	0.5 %	
qemu	101 (crait)	0.0 %	49.3 %	0.9% of 4 ...	5 days 17.07...	0.2% of 16...	6.3 %	
qemu	106 (anoat-MacOS12)	-	-	-	-	-	-	
qemu	107 (corellia-debian-aarch64)	-	-	-	-	-	-	
qemu	108 (bogano-debian-armhf)	-	-	-	-	-	-	
qemu	109 (anaxes-debian-mips)	-	-	-	-	-	-	
storage	backup_system (hoth)	20.2 %	-	-	-	-	-	
storage	images (hoth)	46.9 %	-	-	-	-	-	
storage	local (hoth)	46.9 %	-	-	-	-	-	
storage	local-lvm (hoth)	7.8 %	-	-	-	-	-	

PROXMOX Virtual Environment 7.3-6

Server View

Virtual Machine 100 (hapes) on node 'hoth' No Tags

Summary

Console

Hardware

Cloud-Init

Options

Task History

Monitor

Backup

Replication

Snapshots

Firewall

Permissions

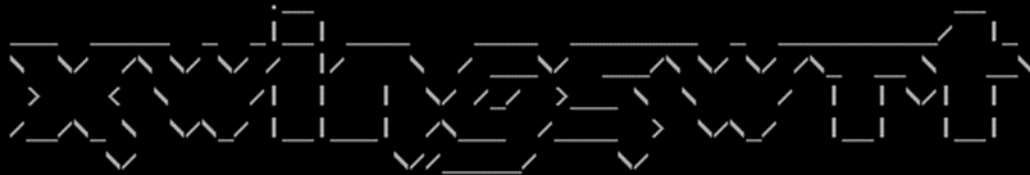
Memory	1.00 GiB
Processors	1 (1 sockets, 1 cores)
BIOS	Default (SeaBIOS)
Display	Default
Machine	Default (i440fx)
SCSI Controller	VirtIO SCSI
Hard Disk (scsi0)	local-lvm:vm-100-disk-0,size=8G
Network Device (net0)	virtio=16:FF:F5:EB:51:69,bridge=vibr0
EFI Disk	local-lvm:vm-100-disk-1,efitype=4m,pre-enrolled-keys=1,size=4M
PCI Device (hostpci0)	0000:04.00.0
PCI Device (hostpci1)	0000:05.00.0

OpenWRT aka xwingsWRT

```
No EFI environment detected.  
early console in extract_kernel  
input_data: 0x00000000023ad3a8  
input_len: 0x00000000004eb72c  
output: 0x0000000001000000  
output_len: 0x000000000185f8d0  
kernel_total_size: 0x0000000001626000  
needed_size: 0x0000000001a00000  
trampoline_32bit: 0x000000000009d000
```

```
Decompressing Linux... Parsing ELF... done.  
Booting the kernel.  
Please press Enter to activate this console.
```

```
BusyBox v1.36.0 (2023-03-26 14:18:00 UTC) built-in shell (ash)
```



By xwings

| Powered by <https://openwrt.org/> |

```
root@hapes:~#
```

hapes

Status

System

Hostname: hapes

Model: QEMU Standard PC (i440FX + PIIX, 1996) - Common KVM processor - 1 Core 2 Thread (CpuMark: 30334.44951 Scores)

CPU Info: 2496.000 MHz

Firmware Version: OpenWrt R23.2.14 / LuCI Master (git-23.050.56566-8351ec)

Kernel Version: 6.1.12

Local Time: Wed Mar 22 13:19:06 2023

Uptime: 1d 27h 23m 36s

Load Average: 0.00, 0.00, 0.00

CPU usage (%): 20 %

Memory

Total Available: 757 MB / 987 MB (77%)

Buffered: 4 MB / 987 MB (0%)

Interfaces

eth0: - half-duplex

eth1: 2500mbps full-duplex

hapes

Netlink Bandwidth Monitor

Select accounting period: 2023-03-01 - 2023-03-28

Traffic Distribution | Application Protocols | IPv6 | Export

Traffic / Host | Connections / Host

13 hosts
197.09 GB download
117.64 GB upload
4.78 M connections

HOST	MAC	CONNECTIONS	DOWNLOAD (BYTES / PACKETS)	UPLOAD (BYTES / PACKETS)
apt	3A:76:AD:FE:B3:C9	883.68 K	158.24 GB	23.48 MP
-	DC:D8:7C:4A:CE:82	3.07 M	27.91 GB	58.26 MP
portainer	CE:8D:27:EA:CE:A3	654.92 K	7.31 GB	9.73 MP
takodana	D8:9D:67:EE:3A:49	116.22 K	3.53 GB	3.25 MP
hapes	16:FF:F5:EE:51:69	4.61 K	0 B	0 P
-	7A:F8:30:BA:E9:22	18.48 K	55.32 MB	53.36 KP
-	46:74:A6:00:35:DB	664	49.09 MB	28.46 KP
-	other	17.84 K	344.62 KB	2.82 KP
-	84:14:4D:05:0F:87	2.33 K	0 B	0 P
-	B4:C9:B9:DA:06:4F	2.33 K	0 B	0 P
-	B0:E4:D5:B5:24:83	2.45 K	0 B	0 P
-	A0:36:9F:2E:00:DC	2.41 K	599.30 KB	1.64 KP
-	64:90:C1:05:15:90	12	0 B	0 P


hopos

AUTO REFRESH 0

Overviews Global Settings Servers and Groups Rule Providers and Groups Config Update Config Manage Server Logs

OpenClash

A Clash Client For OpenWrt



New Release v0-45.103-beta

[Wiki](#) [Tutorials](#) [Star](#) [Telegram](#) [Sponsor](#)

Tip: If you do not use IPv6, please turn off the DHCP service of IPv6, otherwise the connection will be abnormal

Main Program	Running Daemons: Running	Control Panel Login IP	10.10.18.254
Running Mode	Redir-Host Compatible TUN Mix	Control Panel Login Port	9090
Proxy Mode	Rule Global Direct Script	Control Panel Login Secret	123456
Yacd Control Panel	OPEN PANEL	Dashboard Control Panel	OPEN PANEL

Up: 1.0 B/S Down: 103.3 B/S Up Total: 345.0 MB Down Total: 4.4 GB Connections: 92 Ram: 57.7 MB CPU: 0 %

STATE	CONFIG ALIAS	SUBSCRIPTION INFO	UPDATE TIME	GRAMMAR CHECK	SWITCH CONFIG
Enable	Dieryaml	150.8 GB / 999.4 GB (84.9%) 2024-03-11 (Remaining: 327 days)	2023-03-22 09:59:54	Config Normal	SWITCH CONFIG

IP Address

IP.TB Mainland:	113.69.96.80	广东省佛山市 电信
IP.PC Mainland:	113.69.96.80	广东省佛山市 电信
IP.SB Abroad:	103.188.234.15	亚太地区
IP.IFY Abroad:	103.188.234.15	亚太地区

Website Access Check

Baidu Search:	Access Normal	26 ms
NetEase Music:	Access Normal	179 ms
GitHub:	Access Normal	303 ms
YouTube:	Access Normal	54 ms

Powered by ip.skk.moe

Web Categorization

策略组

代理

日志

规则

连接

设置

Proxy	Selector	Auto-Update	DIRECT	cn 台湾 AC	cn 台湾 IEPL [01] [Lite]	cn 台湾 IEPL [02] [Lite]	cn 台湾 AC	cn 台湾 IEPL [01] [Lite]	cn 台湾 IEPL [02] [Lite]	cn 新加坡 AC
Domestic	Selector	DIRECT	Proxy	cn 台湾 AC	cn 台湾 IEPL [01] [Lite]	cn 台湾 IEPL [02] [Lite]	cn 台湾 AC	cn 台湾 IEPL [01] [Lite]	cn 台湾 IEPL [02] [Lite]	cn 新加坡 AC
Others	Selector	Proxy	DIRECT	cn 台湾 AC	cn 台湾 IEPL [01] [Lite]	cn 台湾 IEPL [02] [Lite]	cn 台湾 AC	cn 台湾 IEPL [01] [Lite]	cn 台湾 IEPL [02] [Lite]	cn 新加坡 AC
AdBlock	Selector	SELECT	DIRECT	Proxy						
Apple	Selector	DIRECT	Proxy	cn 台湾 AC	cn 台湾 IEPL [01] [Lite]	cn 台湾 IEPL [02] [Lite]	cn 台湾 AC	cn 台湾 IEPL [01] [Lite]	cn 台湾 IEPL [02] [Lite]	cn 新加坡 AC
Apple TV	Selector	Proxy	DIRECT	cn 台湾 AC	cn 台湾 IEPL [01] [Lite]	cn 台湾 IEPL [02] [Lite]	cn 台湾 AC	cn 台湾 IEPL [01] [Lite]	cn 台湾 IEPL [02] [Lite]	cn 新加坡 AC
Google FCM	Selector	Proxy	DIRECT	cn 台湾 AC	cn 台湾 IEPL [01] [Lite]	cn 台湾 IEPL [02] [Lite]	cn 台湾 AC	cn 台湾 IEPL [01] [Lite]	cn 台湾 IEPL [02] [Lite]	cn 新加坡 AC
Scholar	Selector	DIRECT	Proxy	cn 台湾 AC	cn 台湾 IEPL [01] [Lite]	cn 台湾 IEPL [02] [Lite]	cn 台湾 AC	cn 台湾 IEPL [01] [Lite]	cn 台湾 IEPL [02] [Lite]	cn 新加坡 AC
Asian TV	Selector	DIRECT	Proxy	cn 台湾 AC	cn 台湾 IEPL [01] [Lite]	cn 台湾 IEPL [02] [Lite]	cn 台湾 AC	cn 台湾 IEPL [01] [Lite]	cn 台湾 IEPL [02] [Lite]	cn 新加坡 AC
Global TV	Selector	Proxy	DIRECT	cn 台湾 AC	cn 台湾 IEPL [01] [Lite]	cn 台湾 IEPL [02] [Lite]	cn 台湾 AC	cn 台湾 IEPL [01] [Lite]	cn 台湾 IEPL [02] [Lite]	cn 新加坡 AC
Netflix	Selector	Proxy	DIRECT	cn 台湾 AC	cn 台湾 IEPL [01] [Lite]	cn 台湾 IEPL [02] [Lite]	cn 台湾 AC	cn 台湾 IEPL [01] [Lite]	cn 台湾 IEPL [02] [Lite]	cn 新加坡 AC
Disney	Selector	Proxy	DIRECT	cn 台湾 AC	cn 台湾 IEPL [01] [Lite]	cn 台湾 IEPL [02] [Lite]	cn 台湾 AC	cn 台湾 IEPL [01] [Lite]	cn 台湾 IEPL [02] [Lite]	cn 新加坡 AC
Spotify	Selector	Proxy	DIRECT	cn 台湾 AC	cn 台湾 IEPL [01] [Lite]	cn 台湾 IEPL [02] [Lite]	cn 台湾 AC	cn 台湾 IEPL [01] [Lite]	cn 台湾 IEPL [02] [Lite]	cn 新加坡 AC
YouTube	Selector	Proxy	DIRECT	cn 台湾 AC	cn 台湾 IEPL [01] [Lite]	cn 台湾 IEPL [02] [Lite]	cn 台湾 AC	cn 台湾 IEPL [01] [Lite]	cn 台湾 IEPL [02] [Lite]	cn 新加坡 AC
Telegram	Selector	Proxy	DIRECT	cn 台湾 AC	cn 台湾 IEPL [01] [Lite]	cn 台湾 IEPL [02] [Lite]	cn 台湾 AC	cn 台湾 IEPL [01] [Lite]	cn 台湾 IEPL [02] [Lite]	cn 新加坡 AC
Crypto	Selector	Proxy	DIRECT	cn 台湾 AC	cn 台湾 IEPL [01] [Lite]	cn 台湾 IEPL [02] [Lite]	cn 台湾 AC	cn 台湾 IEPL [01] [Lite]	cn 台湾 IEPL [02] [Lite]	cn 新加坡 AC
Discord	Selector	Proxy	DIRECT	cn 台湾 AC	cn 台湾 IEPL [01] [Lite]	cn 台湾 IEPL [02] [Lite]	cn 台湾 AC	cn 台湾 IEPL [01] [Lite]	cn 台湾 IEPL [02] [Lite]	cn 新加坡 AC
Steam	Selector	Proxy	DIRECT	cn 台湾 AC	cn 台湾 IEPL [01] [Lite]	cn 台湾 IEPL [02] [Lite]	cn 台湾 AC	cn 台湾 IEPL [01] [Lite]	cn 台湾 IEPL [02] [Lite]	cn 新加坡 AC
Speedtest	Selector	Proxy	DIRECT	cn 台湾 AC	cn 台湾 IEPL [01] [Lite]	cn 台湾 IEPL [02] [Lite]	cn 台湾 AC	cn 台湾 IEPL [01] [Lite]	cn 台湾 IEPL [02] [Lite]	cn 新加坡 AC
PayPal	Selector	Proxy	DIRECT	cn 台湾 AC	cn 台湾 IEPL [01] [Lite]	cn 台湾 IEPL [02] [Lite]	cn 台湾 AC	cn 台湾 IEPL [01] [Lite]	cn 台湾 IEPL [02] [Lite]	cn 新加坡 AC
Microsoft	Selector	Proxy	DIRECT	cn 台湾 AC	cn 台湾 IEPL [01] [Lite]	cn 台湾 IEPL [02] [Lite]	cn 台湾 AC	cn 台湾 IEPL [01] [Lite]	cn 台湾 IEPL [02] [Lite]	cn 新加坡 AC
ChatGPT	Selector	Proxy	DIRECT	cn 台湾 AC	cn 台湾 IEPL [01] [Lite]	cn 台湾 IEPL [02] [Lite]	cn 台湾 AC	cn 台湾 IEPL [01] [Lite]	cn 台湾 IEPL [02] [Lite]	cn 新加坡 AC
Auto - Urf...	URLTest	cn 台湾 AC	cn 台湾 IEPL [01] [Lite]	cn 台湾 IEPL [02] [Lite]	cn 新加坡 AC	cn 新加坡 Aliyun [01]	cn 新加坡 Aliyun [02]	cn 新加坡 Aliyun [03]	cn 新加坡 Aliyun [04]	

代理

Shadowsocks sg 新加坡 AC 39ms UDP	Shadowsocks hk 香港 AC [02] 45ms UDP	Shadowsocks hk 香港 IEPL [10] [Premium] 45ms UDP	Trojan hk 香港 Aliyun [04] 46ms UDP	Shadowsocks hk 香港 IEPL [08] [Premium] 46ms UDP	Shadowsocks hk 香港 IEPL [03] [Std] 49ms UDP	Shadowsocks hk 香港 IEPL [07] [Std] 50ms UDP
Trojan cn 台湾 AC 60ms UDP	Shadowsocks hk 香港 IEPL [05] [Std] 61ms UDP	Trojan hk 香港 IEPL [02] [Lite] 62ms UDP	Shadowsocks hk 香港 IEPL [11] [Premium] 67ms UDP	Trojan sg 新加坡 IEPL [01] [Lite] 68ms UDP	Shadowsocks sg 新加坡 IEPL [03] [Std] 69ms UDP	Trojan hk 香港 Aliyun [03] 69ms UDP
Trojan sg 新加坡 Aliyun [03] 143ms UDP	Trojan sg 新加坡 Aliyun [04] 163ms UDP	Trojan jp 日本 BBTEC 192ms UDP	Trojan hk 香港 Aliyun [02] 216ms UDP	Trojan hk 香港 Aliyun [01] 225ms UDP	Trojan jp 日本 IEPL [01] [Lite] 242ms UDP	Trojan jp 日本 IEPL [02] [Lite] 251ms UDP

Update Chinese IP for Local Route

Overviews

Global Settings

Servers and Groups

Rule Providers and Groups

Config Update

Config Manage

Server Logs

Current Config File:

Dler.yaml

SWITCH CONFIG

Global Settings(Will Modify The Config File Or Subscribe According To The Settings On This Page)

Note: To restore the default configuration, try accessing: <http://10.10.18.254/cgi-bin/luci/admin/services/openclash/restore>

Note: It is not recommended to enable IPv6 and related services for routing. Most of the network connection problems reported so far are related to it

Note: Turning on secure DNS in the browser will cause abnormal shunting, please be careful to turn it off

Note: Some software will modify the device HOSTS, which will cause abnormal shunt, please pay attention to check

Note: Game proxy please use nodes except Vmess

Note: The default proxy routes local traffic, BT, PT download, etc., please use redir mode as much as possible and pay attention to traffic avoidance

Note: If the connection is abnormal, please follow the steps on this page to check first: [Click to the page](#)

Operation Mode

General settings

DNS Settings

Meta Settings

Streaming Enhance

Access Control

Rules Setting

Dashboard Settings

IPv6 Settings

Rules Update

GEO Update

Chnroute Update

Au

Auto Update

[?](#) Auto Update Chnroute Lists

Update Time (Every Week)

Every Monday

Update time (every day)

3:00

Custom Chnroute Lists URL

Clang-CN(Default)

[?](#) Custom Chnroute Lists URL, Click Button Below To Refresh After Edit

Custom Chnroute6 Lists URL

Clang-CN-IPv6(Default)

[?](#) Custom Chnroute6 Lists URL, Click Button Below To Refresh After Edit

Custom CN Doamin Lists URL

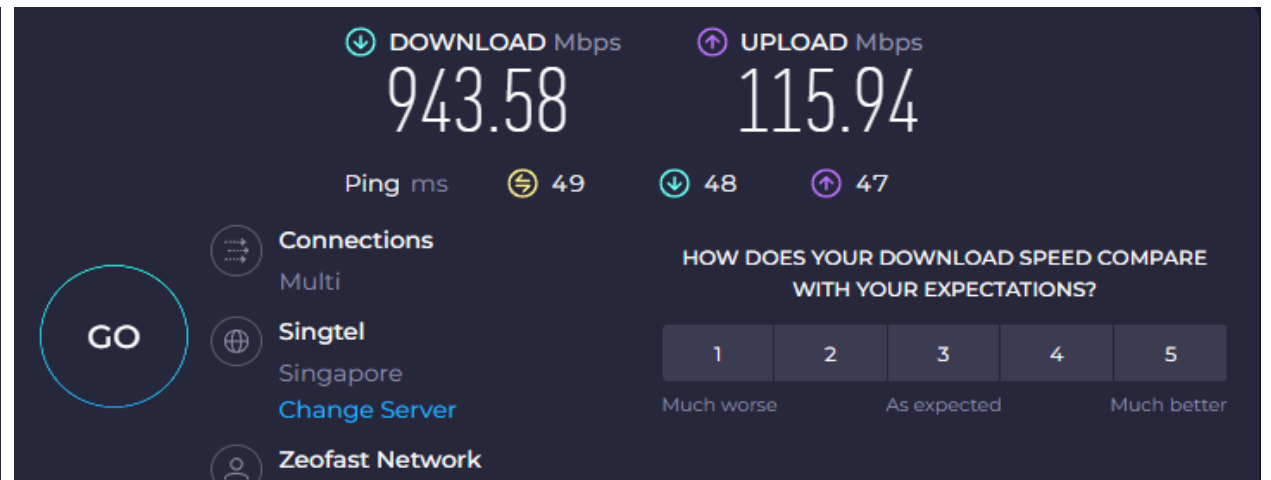
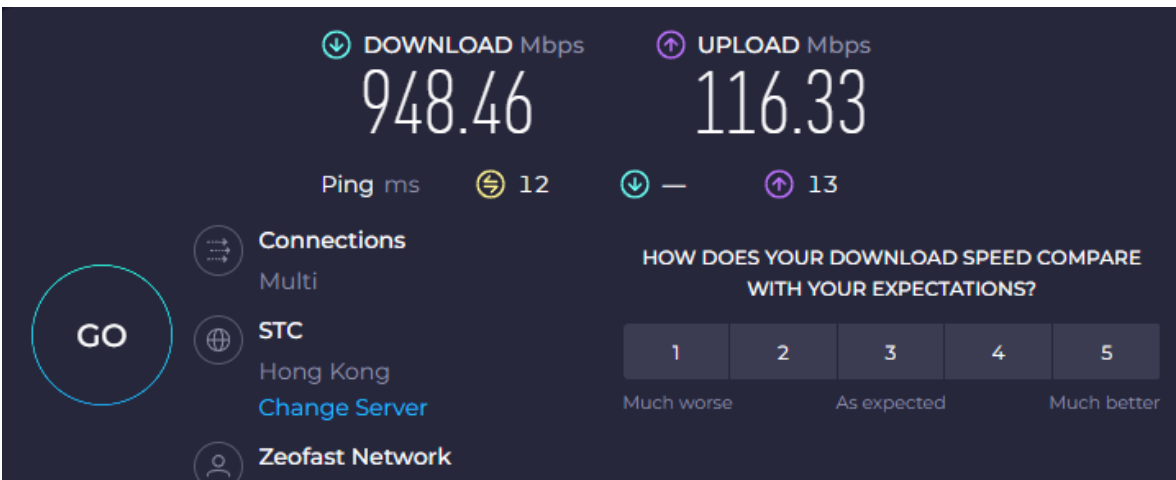
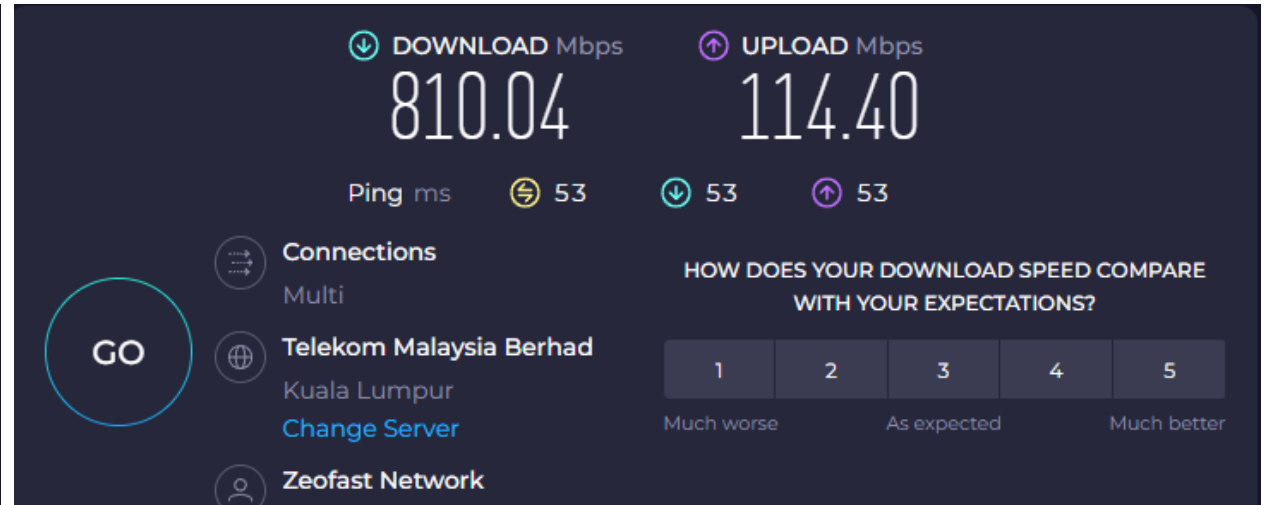
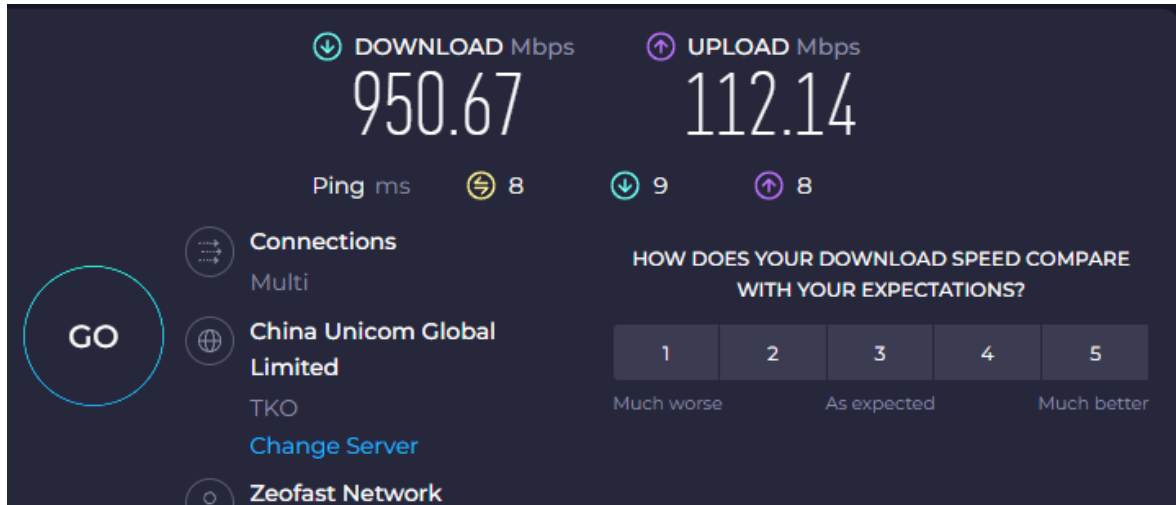
dnsmasq-china-list-testingcf-jsdelivr(Default)

[?](#) Custom CN Doamin Dnsmasq Conf URL, Click Button Below To Refresh After Edit

Update Chnroute Lists

CHECK AND UPDATE

Speed Test



Remote Server

Building Your Own



CloudPowerall [Cloud Server](#) [Dedicated Server](#) [Docs](#) [Affiliates](#) [Register](#) [Login](#)

Categories

- [CN2 GIA Cloud Server](#)
- [AS9929 Cloud Server](#)
- [Los Angeles Dedicated Servers](#)
- [Portland Dedicated Servers](#)
- [HongKong Dedicated Servers](#)
- [IP lease](#)

Actions

- [View Cart](#)

Los Angeles CN2 GIA line directly connected to China.

The backbone network from the U.S. to mainland China is all CN2 GIA lines. Test IP: la-gia-ping.cloudpowerall.com

LAGIA-N2-Executive	LAGIA-N2-Professional	LAGIA-N2-Standard
Starting from \$39.99 USD / mo	Starting from \$19.99 USD / mo	Starting from \$12.99 USD / mo
Intel Xeon E5 Processor 4 Core Processor 8192 MB Memory 120 GB NVMe SSD Disk 3000G/mo Transfer 200 Mbps Peak CN2 GIA 1 Dedicated IPv4	Intel Xeon E5 Processor 2 Core Processor 4096 MB Memory 80 GB NVMe SSD Disk 1500G/mo Transfer 100 Mbps Peak CN2 GIA 1 Dedicated IPv4	Intel Xeon E5 Processor 2 Core Processor 2048 MB Memory 60 GB NVMe SSD Disk 1000G/mo Transfer 100 Mbps Peak CN2 GIA 1 Dedicated IPv4
Order Now	Order Now	Order Now

- Maintenance
- Protocol Update
- Risk To Get Block
- Unreliable Host
- Real CN2/GIA ?

Slow Messy and Unreliable

Just Buy It



Choose Product



Choose Options



Checkout

【V2ray标准套餐】

PRO专业版 (月)
¥ 19.99元 /Monthly

- 个人使用+网页+4K视频
- 150G高速流量
- 每月首日重置流量
- 45+ 组高级多线
- 2+无限量线路
- Netflix/TVB/HBO/Hulu/
- 多客户端同时在线
- 1Gbps高速传输
- 有限技术支持服务

Order Now

PRO专业版 (月)
¥ 24.99元 /Monthly

- 个人使用+网页+4K视频
- 300G高速流量
- 每月首日重置流量
- 45+ 组高级多线
- 2+无限量线路
- Netflix/TVB/HBO/Hulu/
- 多客户端同时在线
- 1Gbps高速传输
- 有限技术支持服务

Order Now

PRO专业版 (季)
¥ 74.99元 /Quarterly

- 个人使用+网页+4K视频
- 300G高速流量
- 每月首日重置流量
- 45+ 组高级多线
- 2+无限量线路
- Netflix/TVB/HBO/Hulu/
- 多客户端同时在线
- 1Gbps高速传输
- 有限技术支持服务

Order Now

PRO专业版 (半年)
¥ 149.99元 /Semi-Annually

- 朋友间共享+网页+视频
- 300G高速流量
- 每月首日重置流量
- 45+ 组高级多线
- 2+无限量线路
- Netflix/TVB/HBO/Hulu/
- 多客户端同时在线
- 1Gbps高速传输
- 有限技术支持服务

Order Now

【V2ray标准套餐】

Global network infrastructure (No SLA guarantee for China)

IPv4

俄罗斯 Edge

状态: 在线

配置信息

速率: 1

Avg speed, realtime: 0 Mbps

Max speed, realtime: 3 Mbps

Max speed, per day: 46 Mbps

负载: 0 %

IPv4

加拿大 Edge

状态: 在线

配置信息

速率: 1

Avg speed, realtime: 0 Mbps

Max speed, realtime: 2 Mbps

Max speed, per day: 43 Mbps

负载: 0 %

IPv4

印度 Edge

状态: 在线

配置信息

速率: 1

Avg speed, realtime: 0 Mbps

Max speed, realtime: 5 Mbps

Max speed, per day: 64 Mbps

负载: 0 %

IPv4

台湾 CHT [01]

状态: 在线

配置信息

速率: 1

Avg speed, realtime: 100 Mbps

Max speed, realtime: 193 Mbps

Max speed, per day: 262 Mbps

负载: 19 %

IPv4

台湾 CHT [02]

状态: 在线

配置信息

速率: 1

Avg speed, realtime: 93 Mbps

Max speed, realtime: 185 Mbps

Max speed, per day: 249 Mbps

负载: 19 %

IPv4

台湾 CHT [03]

状态: 在线

配置信息

速率: 1

Avg speed, realtime: 62 Mbps

Max speed, realtime: 176 Mbps

Max speed, per day: 295 Mbps

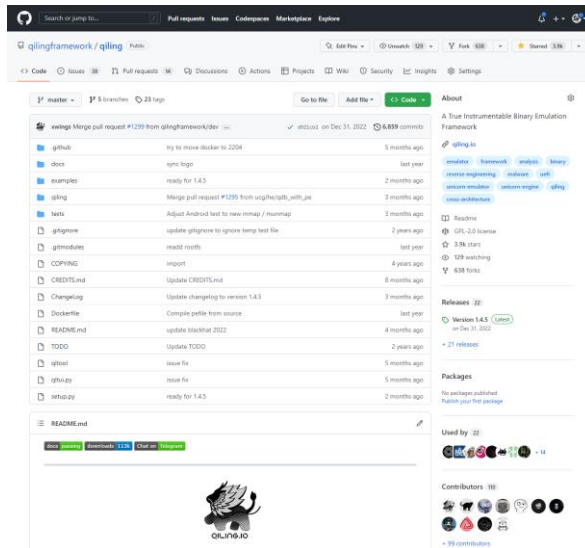
负载: 10 %

Maintenance Free

Everything Else

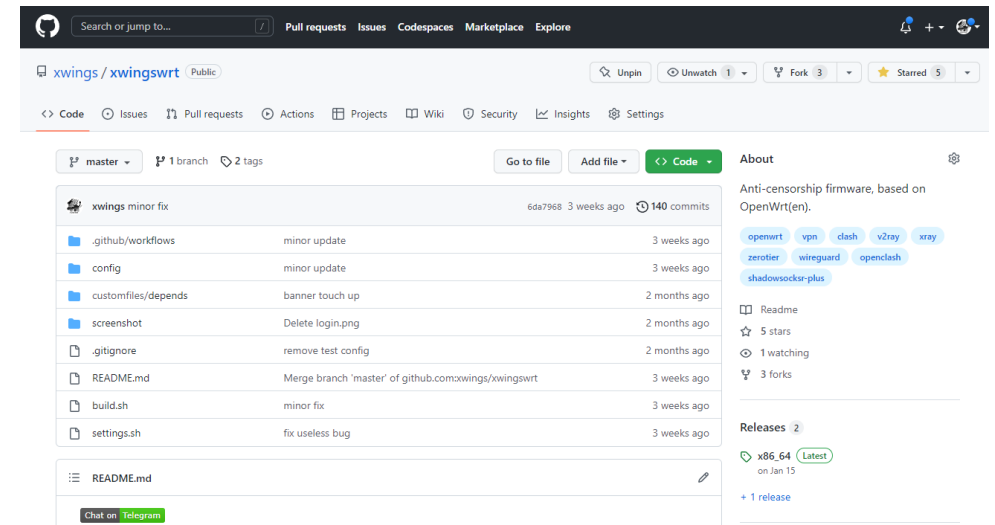
➤ About Qiling Framework

- <https://qiling.io>
- <https://github.com/qilingframework/qiling>
- <https://docs.qiling.io>
- <http://t.me/qilingframework>
- [@qiling_io](#)



➤ About xwingswrt

- <https://github.com/xwings/xwingswrt>
- <https://docs.qiling.io>
- [@onlyxwings](#)



Join Us and Make Pull Request !!!



Questions